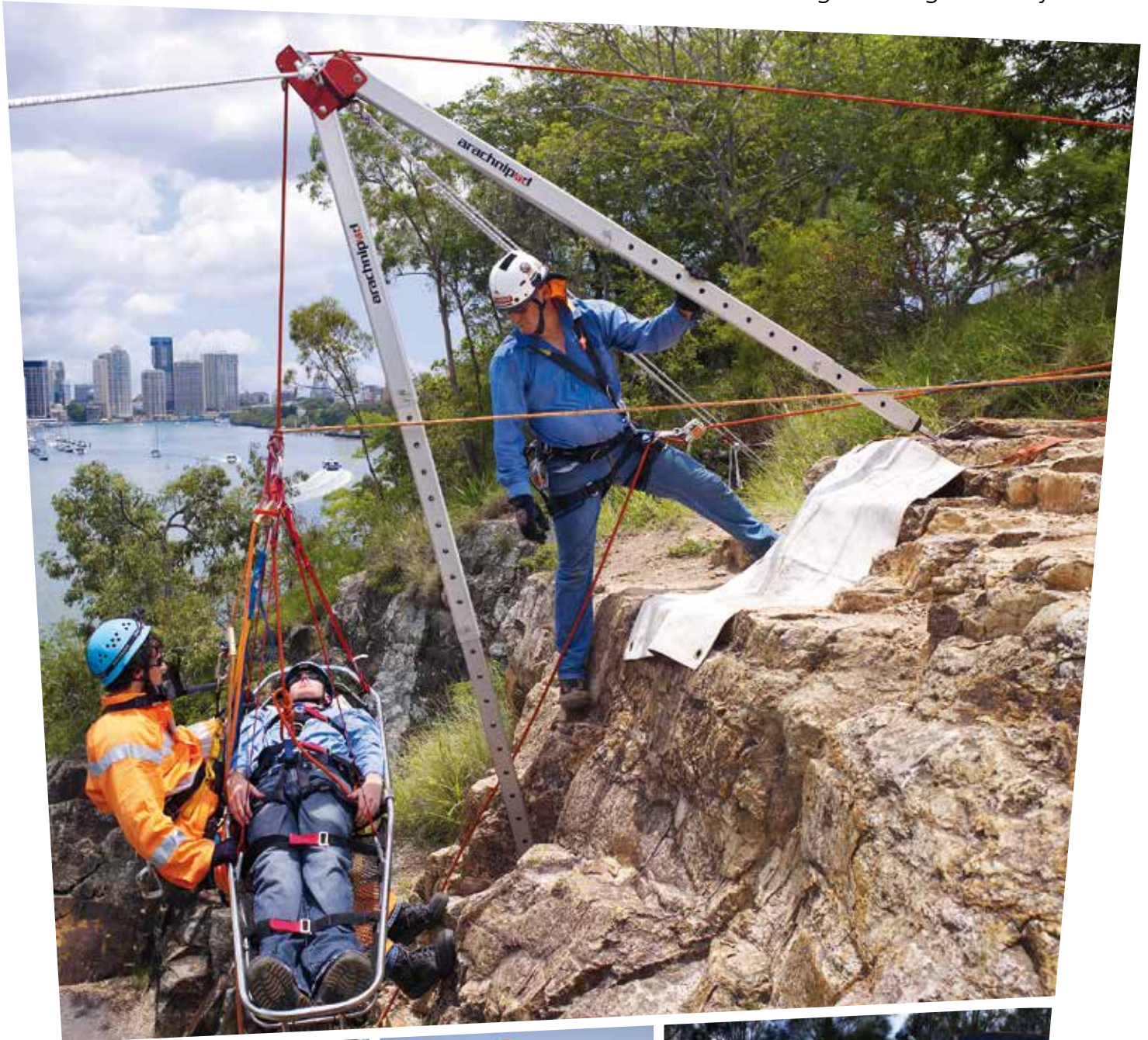




arachnipod

total edge management system



CE Certified in 3 & 4 leg configurations to CEN/TS 16415:2013 for maximum 2 persons and EN 795:2012 for single person use

FERNO

arachnipod

the world's most

versatile

modular

total edge

management

system



ARACHNIPOD'S VERSATILITY MAKES IT IDEAL FOR:

- Rescue and Emergency Services
- Construction Industry
- Military
- Urban Utility Services
- Power
- Telecommunications
- Mining
- Film Industry
- Maintenance



Multi-function capabilities. Simplicity of use. Thoughtful design and robust engineering. These characteristics make Ferno's Arachnipod the world's most versatile modular total edge management system (TEMS).

Ferno are dedicated to design and innovation. We recognised the need for **one single edge management device that easily adjusts into multiple configurations that's not only safe but cost effective.**

The innovative Arachnipod is the result. Based on the concept of an industrial tripod, you'll find Ferno's Arachnipod is much more than just a tripod.

Components can be added or removed as required so that the Arachnipod complements existing structural or natural features.

The unique design of the patented modular head means the Arachnipod can be constructed into many different configurations including a gin pole/monopole, bipod, tripod, quadpod, bridge system and handrail recovery monopole.

Its versatility makes it an ideal system for workers in industries such as, but not limited to:

- Rescue and emergency services
- Construction
- Military

- Water
- Power
- Telecommunications
- Mining
- Film industry
- Maintenance

The Arachnipod has been drop test rated for a 280 kg rescue load and has the capability of holding a 280 kg high directional load as well as a belay system. The recommended rescue belay as tested with a 280 kg rescue load is the Traverse 540° Belay Device.

Ferno advocates that all lowering and hauling systems should be backed up by a belay or secondary system.

Configuration	Leg setting	WLL external anchor point		WLL
		kg	lbs	load anchored to leg kg
Gin Pole at 2050 mm extension	F-6	280	616	N/A
Gin Pole at 3050 mm full extension	A-1	150	330	N/A
A-Frame; Offset A-Frame; A-Frame with lazy leg	A-1	280	616	220
	B-2	340	784	220
	C-3	400	880	220
Tripod & Quadpod	A-1	400	880	220
Handrail Recovery Monopole	F-6	280	616	220
Bridge beam 2000 mm span*	A-1	280	616	220
Bridge beam 3000 mm span*	A-1	230	506	220
Bridge beam 4000 mm span*	A-1	175	385	175

*if bridge beam has Strongbac fitted, WLL for bridge beam becomes 280 kg (616 lbs) at any length up to 4m (13.12 ft).

WLL for bridge trolley is 250 kg (550 lbs). ** Bridge beam WLL differs depending on where the load is positioned along the beam. On a 2m bridge beam the safety factors reduces from 10:1 to <7:1 as the trolley moves from the centre to the end of the beam.

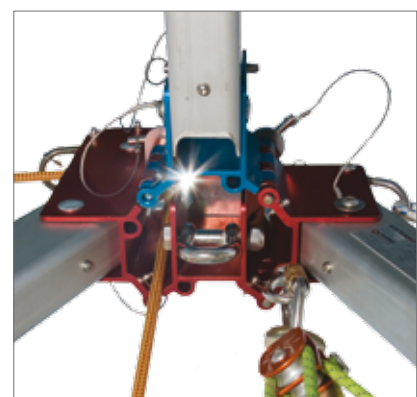
How It Works

The Arachnipod in its basic form is a tripod. It consists of three telescoping legs that are each pivotally connected to an anodised head produced from aluminium extrusion with cutouts down each side.

These cutouts allow two or more heads to connect together with a Qik-link pin (similar to a hinge) which allows the quick and simple addition or removal of legs to create different configurations.

Each head has a D-shackle for guying and stabilisation. The optional pulley leg has an in-built pulley, mounted on two stainless steel roller bearings.

The stainless steel pulley has two grooves - one to take up to 13 mm rope and one to take up to 8 mm wire cable. Stainless steel detent pins prevent the rope or wire from coming out of the grooves.



Configurations



Gin Pole

The gin pole or monopole is ideal for confined spaces where there is insufficient room to use an A-frame or tripod. The Arachnipod's lazy leg converts to a gin pole by attaching the gin head to the leg assembly.

The gin pole is also used as a separate component of a complex high directional system or an additional attachment point in a high line system.

The lazy leg and gin head come standard with the Rescue Plus, Advantage Plus Basic, Advantage Plus and TEMS Kits or can be purchased separately.



Handrail Recovery Monopole

A handrail can be used as an artificial high directional to raise a person or rescue stretcher over an edge.

By using the pulley leg, a simple system can be easily set up to retrieve a rescue stretcher or person, over an edge and through the lower handrail gap.

This effectively transfers the load through the leg sharing the load with the handrail.

It is essential to assess the load bearing capacity of the handrail prior to using this method.



A-Frame

A conventional or off set A-frame can be easily constructed by removing one of the tripod legs. The A-frame can be used in situations where an artificial high directional is required for high lines, or in confined spaces where the area is not big enough to accommodate conventional systems such as the tripod.

An A-frame rigging plate should be used to provide additional tie-off points for stabilisation of the frame.



Sideways A-frame Using Pulley Head

The sideways A-frame with pulley head is ideal for situations which require a high-directional, protruding past an edge such as cliffs, high-rise buildings and bridges. Using one standard head and one pulley head introduces an in-built high directional pulley for ease of use during rescue operations.

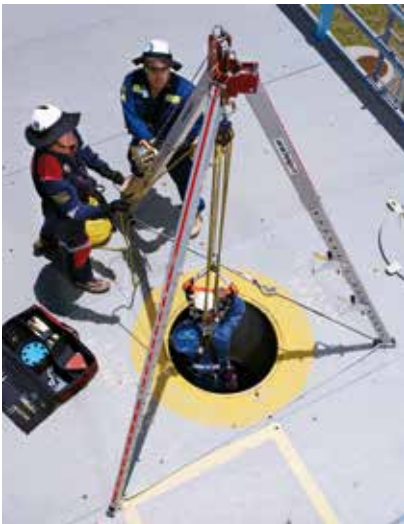
An A-frame rigging plate should be used to provide additional tie-off points for stabilising the frame.



A-frame with Lazy Leg and Reverse Head

By using the lazy leg, the quad plate and the reverse head, an A-frame can be braced against a solid object. The reverse head has a 16 mm (5/8") stainless steel D-shackle to attach live loads which position the load directly in the centre of the legs. The lazy leg can also act as a compression and tension member during use. The lazy leg can be doubled up as a gin pole with the correct attachments. The lazy leg also converts to a standard leg using a lazy leg adaptor.





Tripod

The tripod is a self-supporting device providing quick and easy access to confined space entry points such as manholes and voids. This system can also be used as a high directional frame.

A unique feature of the Arachnipod's tripod and other kits is that it 'flat packs' for convenient storage, yet is quick and easy to set up. The system can be used with either a winch retrieval system, a mechanical advantage system or a Type 3 fall arrest block.

Tripod as High Directional System

The tripod as a high directional system can also be used as a high directional frame to support remote mechanical advantage hauling systems.

Tripod heads should be guyed with the D-shackles to remote anchor points for additional stabilisation.

Quadpod System

The quadpod allows greater versatility and stability of the system when using around larger entry areas of confined spaces. These include small trenched areas, convex and concave surfaces and larger circular openings where a conventional tripod will not facilitate the application.

When setting up the system, an additional leg is added to the tripod. A quad plate is used for forming the head shape.



Bridge System

This is a feature unique to the Arachnipod. The bridge is used for spanning larger openings or voids where a regular tripod, A-frame or quadpod would not be able to, such as trenches, large holes, mines and lift shafts.

It comes as a complete item with trolley, trolley guide rope and heads ready to attach two legs on each end. There is also a tie bar on one end for use with an English Reeve system. However, a remote brake mechanical advantage system can also be attached directly to the trolley.

Standard lengths are 2 m (6' 7"), 3 m (9' 10") and 4 m (13' 1"). The bridge is available separately. If you have a standard tripod you can upgrade to a bridge system by purchasing a bridge kit, which will include a bridge and an additional standard leg.

When a TEMS is purchased a 2 m bridge and additional leg come standard, however, if you require a longer bridge this should be specified on placement of the order.

Arachnipod Kits

The Arachnipod’s modular design allows users the option to acquire a basic unit and upgrade components later to make a more advanced system. The Arachnipod flat packs for simple and convenient storage. There are numerous kits available ranging from the basic tripod through to a total edge management system (TEMS). The table below will help you decide which kit is best for you.



Flat packs for simple storage

Arachnipod Tripods

Components	Tripod Style			
	Industrial	Industrial Plus	Advantage Basic	Advantage
Standard leg	3	2	2	1
Pulley leg		1		1
Lazy leg			1	1
Lazy leg adapter plug			1	1
Foot tether rope	1	1	1	1
Arachnipod bag	Optional	Optional	Standard	Standard

Arachnipod Kit Contents

Contents	Kit				
	Rescue	Rescue Plus	Advantage Basic Plus	Advantage Plus	TEMS
Industrial plus tripod	1				
Advantage tripod		1		1	1
Advantage basic tripod			1		
Arachnipod bag	1	1	1	1	1
Rigging plate	1		1	1	
Spike feet	3				
Quad plate			1	1	
Reverse head			1	1	
Gin head			1	1	
Full accessory kit		1			1
Advantage accessory kit bag			1	1	
2 m or 3 m or 4 m bridge kit in bag with spare leg and foot tether rope					1

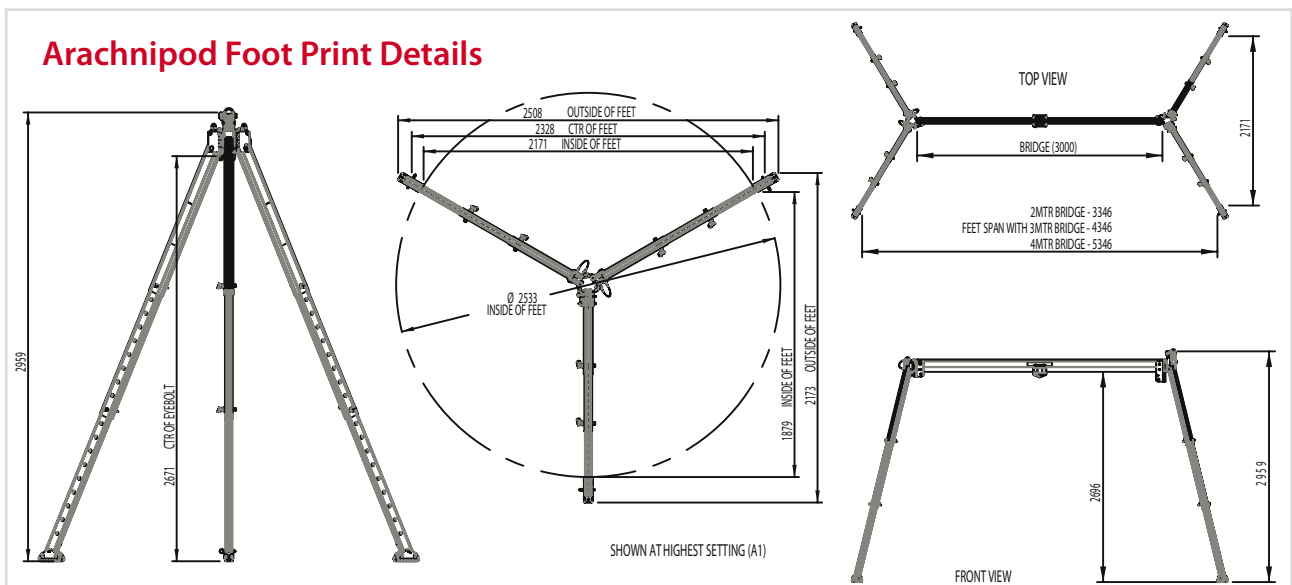
Full accessory kit contents	Qty
Accessory bag	1
Spike feet	4
Gin head	1
Soft ground shoes	4
Hold down stakes	4
M12 Tru-bolts	8
M12 masonry drill bit	2
Spare Qik-link head pins	2
Spare detent pins	2
Spare Ball-lock leg pin	1
Steps	2
Equipment bracket	1
Rigging plate	1
Quad plate	1
Reverse head	1

Optional extras

- Bridge kit stainless steel upgrade kit
- Bridge ratchet strap system
- Additional standard leg
- Additional pulley leg
- Gin head
- Lazy leg extension kit
- Lazy leg adaptor
- 10 m winch and mount (6 mm cable)
- 20 m winch and mount (6 mm cable)
- Type 3 fall arrest block and mount

Extra legs and all accessories can be ordered separately to suit custom requirements

Arachnipod Foot Print Details



Accessories and Features



Gin head



Reverse head



Rigging plate



Quad plate



Lazy leg adaptor

Feet

Standard feet are supplied on all Arachnipods but can be easily removed for other feet types. Standard feet have moulded soft polyurethane tread for grip and holes for attaching tether lines or to anchor points. Additional holes allow the Arachnipod to be secured to various ground surfaces. The accessory kit contains masonry bolts for concrete or rock. Hold-down stakes for securing into soft ground. Spike feet can be used for rocky terrain or with the soft ground discs when using on sand or supple ground. The soft ground discs clip over the spike foot allowing the spike to dig in the ground, but preventing the leg sinking.



Standard foot



Hold-down stake



Spike foot



Soft ground shoe



Steps are used to access the head to untangle ropes or attach additional gear without having to lower the system.



Type 2 Winch with Mount Bracket. A basic wind up, wind down mechanism with 6 mm galvanised steel cable and steel screw gate karabiner. Available 10 m, 20 m or 25 m.
Weight: 11.75 kg (10 m)
WLL: 220 kg
MBF: 22 kN
EN 1496 Class B



Type 3 Fall Arrest Block with Mount Bracket
Inertia reel with the ability for wind up, wind down mechanism for emergency recovery. 8mm galvanised steel cable with Twist lock, Fall-indicating, Swivel Eye Karabiner. Available 15 m, 1 person fall arrest.
Weight: 14.5 kg
WLL: 136 kg
CE EN 360.2002, CE EN 1496, ANSI 2359.01 (2007)



An **Alpha-Numeric Labelling** allows easy setting of the system to the correct height.
*Standard on all units



The **Equipment Bracket** can be used for rope descenders, belay devices, hauling systems and for tying off rope.



The **Lazy Leg Extender Kit** is used to provide additional bracing to support an "A" frame configuration.

Emergency
Rescue
Height Safety
Rock Climbing
Home Care
Mortuary

Ferno Australia

Head Office
11 Johnstone Road
Brendale Qld 4500
Australia

Call toll free (Australia)
1800 804 647

t +61 7 3881 4999
f +61 7 3881 1125

VIC
18 Damosh Avenue
Carrum Downs VIC 3201
t +61 7 3881 4999
f +61 3 9775 1360

WA
22 Casella Place
Kewdale WA 6105
t +61 8 9353 2300
f +61 8 9353 1169

www.ferno.com.au

FERNO



Distributor